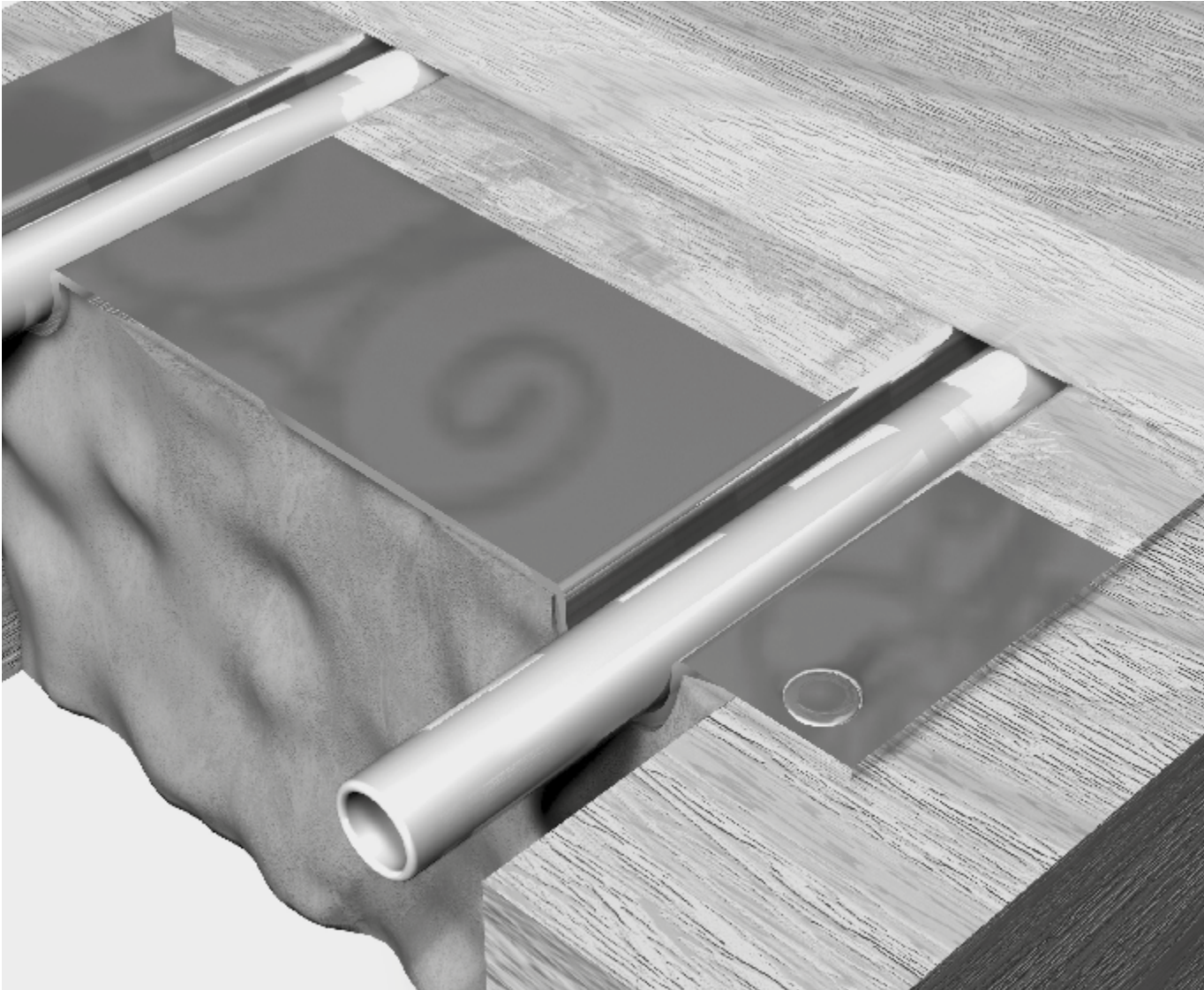
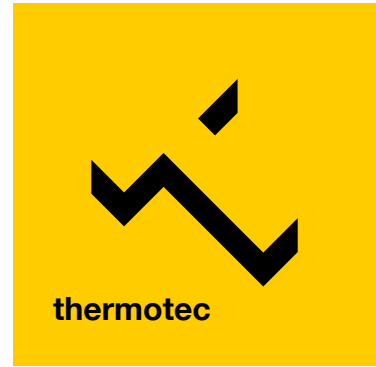


# TPA15

## Product

### Aquafloor

Aluminium Plate Underfloor Heating System



## Contact

### thermotec

Southpoint, Compass Park,  
Bodiam, Robertsbridge  
TN32 5BS

[thermotecuk.com](http://thermotecuk.com)



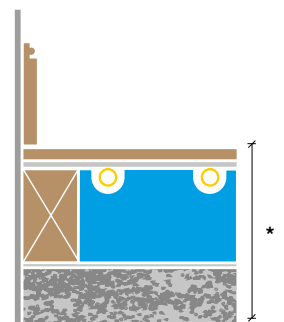
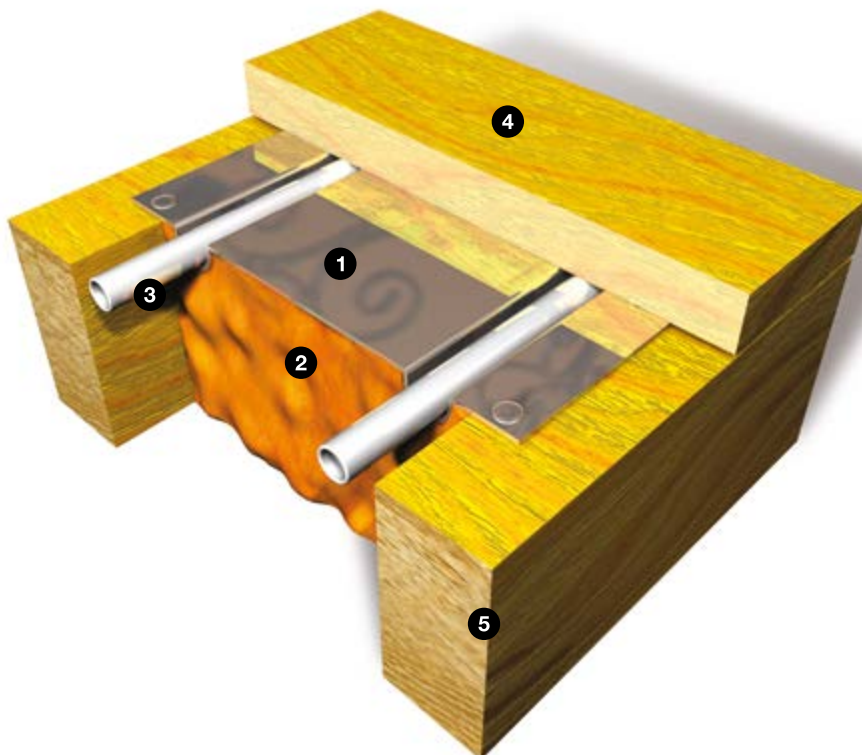
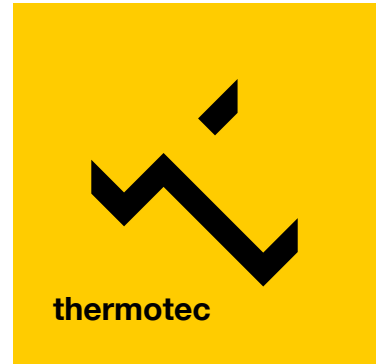
---

## Aluminium Plate Underfloor Heating System

---

Suspended Timber Floors

---



### TYPICAL SECTION

- 1 Aquafloor routed and foiled EPS insulation panel.
- 2 Aquafloor 17mm PEX multilayer UHF pipe
- 3 Structural floor deck
- 4 Timber floor
- 5 Timber floor joists

### FEATURES AND BENEFITS

- Aquafloor routed rigid insulation panel with laminated aluminum foil face to allow good heat diffusion
- System can be installed within typical joisted floor construction, add-ins no exact height to floor make up.
- Typical heating outputs range from 50 – 80w/m<sup>2</sup>
- Aquafloor insulation panel is available in a range of thickness from 25 – 100mm

Heat output of up to 80watts/m<sup>2</sup>

Suitable for laying on timber joisted floors and sprung sports floors

Individual temperature control in every room

**\*technical specifications available on request**