

TP
344

Project

Frith Park
Sturts Lane
Tadworth



thermotec



Contractors / Partners

reside
construction

Project

Frith Park
Sturts Lane
Tadworth



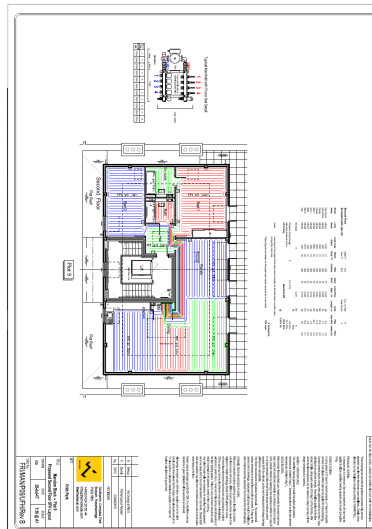
Project Brief

Working with Reside, Thermotec were asked to provide a complete design and installation scheme, in compliance with the latest environmental and technological heating systems.

Scope of Works

Thermotec delivered a fully integrated floor build up system from the sub-floor base to the final floor screed using our TPA11 Aquafloor Cliprail underfloor heating system and insulation and TPA21 15mm Panel Underfloor Heating System using our latest touchscreen thermostats. The project was managed, installed and supervised by Thermotec, and was delivered on time and within budget.

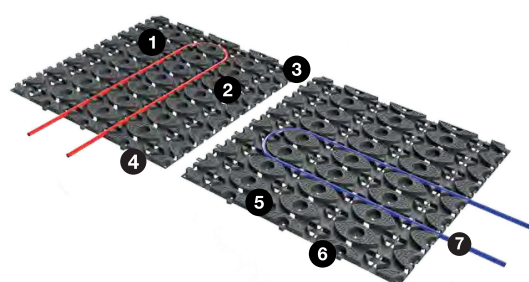
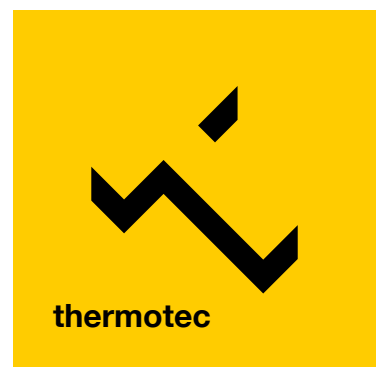
Project Value: £2M



Project Details

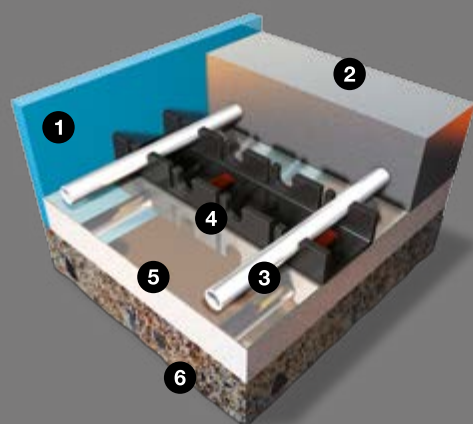
Frith Park is an exciting regeneration project with a collection of 26 new, two & three-bedroom mews-style country cottages and four-bedroom villas arranged in a courtyard setting together with 11 two & three-bedroom apartments behind the retained façade of the locally listed Mansion House and set amongst eight acres of idyllic parkland, formal gardens and ancient woods. All 11 apartments within the Mansion House have certain design features that set them apart from their neighbours at Frith Park.

3,250 m²



Aquafloor Installation

- 1 Pipe retention clips
- 2 Adhesive supports
- 3 Snap clips
- 4 V notched break points
- 5 Insulation layer
- 6 Slide and lock connection
- 7 Ultra low profile



Aquafloor Installation

- 1 Expansion edging strip
- 2 Screed minimum 65mm
- 3 Aquafloor heating pipe
- 4 Heating pipe rail
- 5 Foil faced insulation min 25mm
- 6 Solid sub-floor



Unsurpassed in logistics and project planning. Assured quality installations for the mechanical and electric sector.

thermotecuk.com